



**CATHOLIC
YOUTH SPORTS**

**U6 & U8
SOCCER
RULES
FALL 2023**

I. START/RE-START OF PLAY

LEAGUE SETUP

- All U6 and U8 divisions play four versus four (4v4)
- **No goalies** in any division
- Score is kept on all league games by the referee
- No overtime in the regular season (first 8 weeks of the season)

GAME LENGTH

U6 and U8

- **Two, Twenty (20) Minute Halves with 4 periods of five (5) minutes per period**
- **3 Minute Halftime**
- **Total Game Length: 40 Minutes + 3 Minute Halftime**
- **Substitutions: Mandatory every five (5) Minutes**

HEADING

U6 and U8

NO HEADING OF THE BALL!

Heading of the ball is a foul and the offending team loses possession at the spot and a direct kick is given to the opposing team

KICKOFF

- . The Home Team listed on the schedule will kickoff.**
- . The Visiting Team listed on the schedule will select a side to defend first.**
- . In the playoffs, the higher seeded team will decide whether to kickoff or defend.**
- . The start of play beginning each half and after a goal shall proceed with a kickoff.**

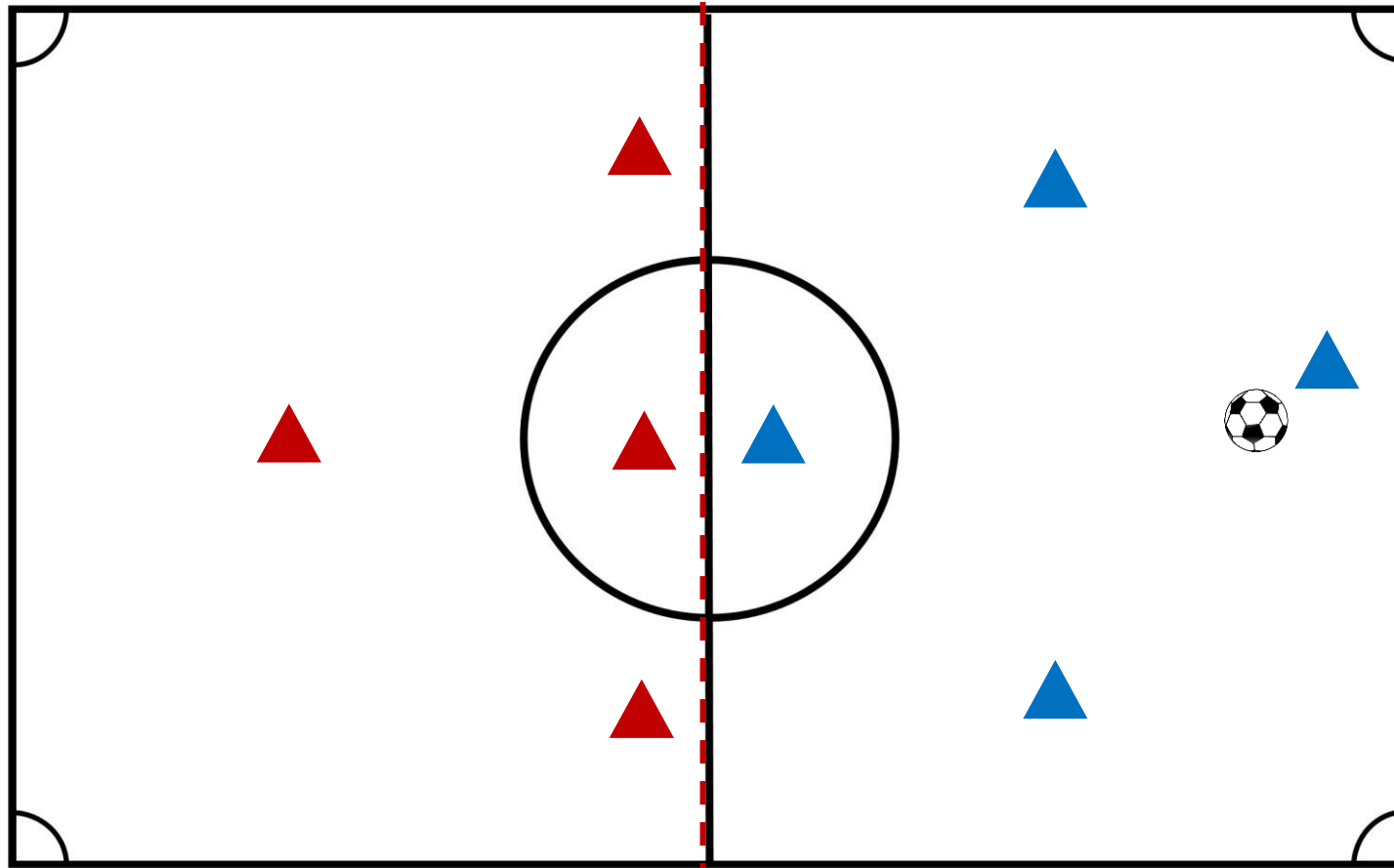
KICK OFF

- . The ball shall be kicked while it is stationary on the ground in the center of the field of play.
- . May be taken in any direction.
- . A goal may not be scored directly from the kickoff.
- . The ball is in play when it moves.

GOAL KICK

- . Results when the ball goes completely over the end line having last been touched by an attacking player.
- . A member of the defensive team kicks the goal kick from the Goal Box line.
- . In **U6 & U8**, all defenders must be at **MIDFIELD**. Defenders cannot cross the designated line until the ball is put into play (see diagram next page).

GOAL KICK POSITIONING – U6 & U8



CORNER KICK

- . Results when the ball goes completely over the end line having last been touched by a defensive player.
- . A member of the offensive team kicks the corner kick from a spot within one yard arc of the corner of the field nearest where the ball left the field.
- . A goal may be scored directly from a corner kick.

THROW IN

- . Results when the ball goes completely over the touch line (sideline).
- . The throw shall be taken from the point where the ball crossed the line by a player of the opposing team.
- . All dead ball kicks (kick-ins, free kicks, kickoffs) are **direct** free kicks (direct kicks permit the attacking team to kick the ball to score a good goal)

FIVE (5) YARD RULE

In all dead ball situations, **defending players must stand at least five (5) yards away from the ball.** If the defensive player's goal area is closer than five yards, the ball shall be placed five yards from the goal area in line with the place of the penalty.

II. GOAL

GOAL SCORING

A goal may be scored from a touch on the **offensive half** on the playing field.

GOAL

Scored when the entire ball goes **completely** over the goal line.

III. OTHER

HANDBALL IN FRONT OF GOAL

If a hand ball occurs intentionally in front of the goal **AND** the ball would have crossed the goal line, a goal is counted, and the offending player may be given a yellow card.

RULE INFRINDGEMNETS

- . As outlined in Law 12 of the Laws of Soccer, such as tripping, pushing, or hand balls.**
- . The on-field referee has sole discretion in determining whether an infraction has occurred.**

RULE INFRINGEMENTS

- **The on-field official/referee has the right to caution or eject a player as a result of a rule infringement which, in the opinion of the official, merits such action.**

RULE INFRINDGEMNETS

- Goals also cannot be scored directly from a goal kick, throw in, or kick off. If the ball goes completely across the goal line, without being touched by a player other than the initial kicker on one of these set plays, then the result is a **goal kick** for the opposing team.

OFFSIDES

*No Offsides in U6 and U8 divisions
in the league.*

SLIDE TACKLING



- Not allowed for any age division.
- Penalty for this infraction will be a **warning** on the first offense.
- The second offense will result in being given a yellow card.

Keeping our youth safe from injuries is critical!

PLAYER CAUTION/EJECTION



- . Referees have the right to caution and/or eject a player from the game for continual disobedience or as a result of an incident that warrants cautioning the player or sending the player off.

PLAYER CAUTION/EJECTION



- **RED CARD suspension** = Rest of game PLUS next game. Sports Director may eject player for rest of season.
- **RED/YELLOW** = Player being sent off the field for the remainder of the shift and sitting the remainder of the half.

EQUIPMENT

- All players MUST WEAR SHIN GUARDS! Any player without shin guards will not be allowed to play.
- Tennis shoes or rubber/plastic molded sole soccer shoes must be worn. NO METAL!
- All athletes are required to wear issued uniforms.

EQUIPMENT

- All athletes must have the CYS Sports emblem on their uniform and wear black shorts.
- Chains, earrings, other jewelry, glitter, face paint or other inappropriate items may not be worn during competition.
- In cold weather, the player can wear black sweatpants, track or yoga pants with no pockets.

SCORE AND TIME

SCORE AND TIME: The referee will keep the official score and time during the match.